



architectural projects



Park Place

Location: Missoula, MT

Building Type: Parking Garage

Application: Screening, air flow, light flow, security

Pattern: 1/2" diameter holes x 3/4" spacings (RS095)

Open Area: 40%

Material: 1/8" 5005-H34 aluminum

Special Requirements: Margins, bolt-holes

Finish: Kynar (PVDF); 8 different colors

Project Distinction: 1,019 panels, 8 colors, 5 different panel sizes. Winner of the International Parking Institute (IPI) Architectural Achievement Award



Chicago Law Office

Location: Chicago, IL

Building Type: Office Building

Application: Decorative, sun screening, privacy screening

Pattern: Custom PicturePerf® design (5 Different hole diameters ranging from 1/4" to 1 3/4")

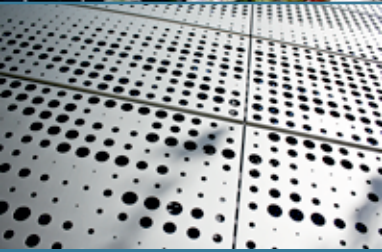
Open Area: Variable

Material: .1875" 5005-H34 aluminum

Special Requirements: Mounting holes, notching, forming

Finish: Class 1 clear anodizing

Project Distinction: Custom PicturePerf® image of a rolling wave, 70 custom perforated panels, 20 panel sizes.



American Airlines Terminal 9, JFK International Airport

Location: New York, NY

Building Type: Airport

Application: Perforated ceiling, decorative, noise control

Pattern: 1/8" diameter holes x 1/4" spacings (RS041)

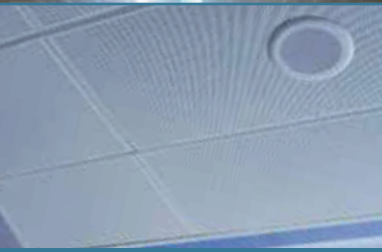
Open Area: 23%

Material: .040" 3003-H14 aluminum

Special Requirements: Forming, laser cutting, turret punching, Soundtex acoustic backing

Finish: Glossy white architectural-grade powdercoat

Project Distinction: Short lead-time, multiple sizes, provided consistent white finish and forming over 170,000 sq. ft. of perforated material (12,000 panels).



Tenley-Friendship Library

Location: Washington, D.C.

Building Type: Public Library

Application: Decorative, sun screening, privacy screening

Pattern: 375" diameter holes x .973" spacings (RST155)

Open Area: 13%

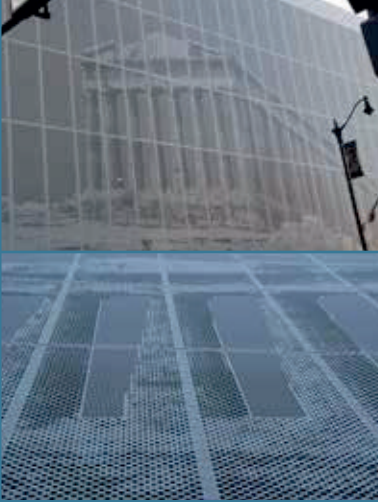
Material: 3/8" 3003-H14 aluminum

Special Requirements: Shearing, mounting holes, forming, custom brackets

Finish: Kynar (PVDF)

Project Distinction: 3/8" holes in 3/8" aluminum, 480 panels, 27" x 72" panel size.





Arkadia Tower

Location: Chicago, IL (Greektown)

Building Type: High-Rise Apartment Building/5 Story Parking Garage

Application: Decorative, screening, air flow, light flow, security

Pattern: Custom PicturePerf® design & 3/4" diameter holes x 1 1/8" spacings (RS252)
(8 Different hole diameters ranging from 3/4" to 1 3/4")

Open Area: PicturePerf® Panels (Variable), Perforated Panels - 33%

Material: .125" 5052-H32

Special Requirements: Mounting holes

Finish: Kynar (PVDF)

Project Distinction: Custom PicturePerf® image of the Acropolis & Greek Runners, 480 perforated panels, 78 different sizes, panels up to 16'.



Valley Health Center

Location: Sunnyvale, CA/Gilroy, CA

Building Type: Hospital

Application: Decorative, sun screening

Pattern: 3/8" diameter holes x 3/4" spacings (RS087)

Open Area: 23%

Material: .125" 3003-H14 aluminum

Special Requirements: Forming, mounting holes, laser cutting

Finish: White Kynar (PVDF) Finish

Project Distinction: Arrayed perforation pattern on radiused panel, manufactured to meet California's stringent wind and earthquake-resistant construction requirements, welded radiused angles of dissimilar grades, stamped with part numbers for easy on-sight assembly



Illinois State Emergency Operations Center

Location: Springfield, IL

Building Type: Government Building

Application: Sun screening, wind screening, decorative

Pattern: 1/2" diameter holes x 3/4" spacings (RS095)

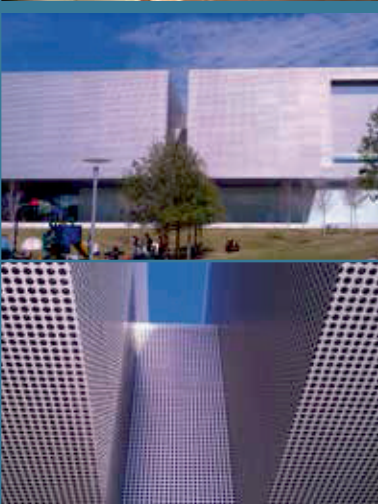
Open Area: 40%

Material: 32 oz. copper

Special Requirements: Corrugation, margins, forming, mounting holes

Finish: No finish – natural copper patina

Project Distinction: 18,000 sq. ft. of 32 oz perforated copper in numerous panel sizes, precise-aligned mounting holes.



Tampa Museum of Art

Location: Tampa, FL

Building Type: Museum

Application: Decorative, building façade, wind screening, sun shading

Pattern: 3" diameter holes x 4" spacings (straight-row, custom pattern)

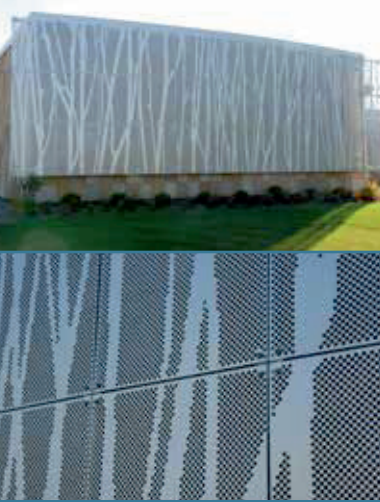
Open Area: 44%

Material: .125" 5052-H32 aluminum

Special Requirements: Sheared, margins, mounting holes

Finish: Class 1 clear anodized finish

Project Distinction: Double perforated metal skin composed of 3,798 panels, 900,000 holes, created unique perforation pattern, provided material and finish consistency for visual uniformity over the 66,000 sq. ft. building.



Beloit Health System Treatment Center

Location: Beloit, WI

Building Type: Hospital

Application: Decorative screening

Pattern: Custom PicturePerf® design

Open Area: PicturePerf® Panels (Variable)

Material: .125" 5052-H32 aluminum

Special Requirements: Mounting holes stamped with part numbers for easy on-sight assembly

Finish: Class 1 clear anodizing

Project Distinction: Custom PicturePerf® image of tree trunks and branches in a forest representing growth and perseverance.



Philadelphia University DEC Center

Location: Philadelphia, PA

Building Type: Education Building

Application: Decorative, sun screening, wind screening

Pattern: 3/8" diameter holes x 9/16" spacings (RS089)

Open Area: 40%

Material: .080" 5005-H34 aluminum

Special Requirements: Custom 5" v-beam corrugation, support structure, mounting holes

Finish: Class 1 clear anodizing

Project Distinction: Structural engineering, 300 panels, 10 different lengths (some 20 feet long), precise-aligned mounting holes.



The New World Center

Location: Miami Beach, FL

Building Type: Concert Hall

Application: Sound control

Pattern: 1/8" diameter holes x 3/16" spacings (RS043)

Open Area: 41%

Material: .063" 3003-H14 aluminum

Special Requirements: Three week lead-time, custom shearing, forming, mounting holes

Finish: 3-Coat Duranar; Silver Storm

Project Distinction: 300 panels, numerous sizes cut to field measurements, tight project timeframe to support project deadline.



21 Kristin Drive

Location: Schaumburg, IL

Building Type: Apartment Complex

Application: Decorative, wind screening, sun screening, privacy screening, security

Pattern: 3/16" diameter holes x 1/2" spacings (RS043)

Open Area: 41%

Material: .125" 5005-H34 aluminum

Special Requirements: Margins, mounting holes

Finish: Class 1 clear anodizing

Project Distinction: Ensured material and finish consistency for visual uniformity across 327 ten-foot long railing panels.